

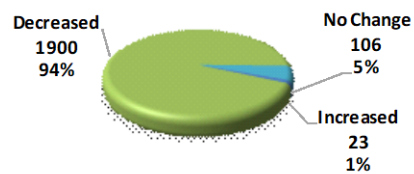
Summary Tables of Consolidated Results of Telephone Survey of MSME Sector on COVID-19 Impact

Main Graphs for Questions 1 to 12

**Q1. In Financial Year 2020-21, your Sales Turnover
(Compared to FY 2019-20)**

	Responses	Response Percentage
Increased	23	1%
Decreased	1900	94%
No Change	106	5%
Total	2029	100%

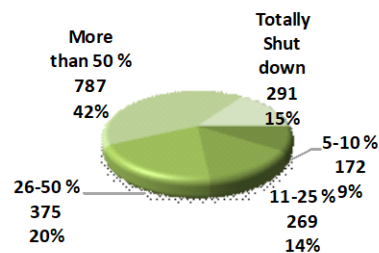
SALES TURNOVER IMPACT ON MSME



Q2: If your Sales Turnover had decreased, by how much?

	Responses	Response Percentage
5-10 %	172	9%
11-25 %	269	14%
26-50 %	375	20%
More than 50 %	787	42%
Totally Shut down	291	15%
Total	1894	100%

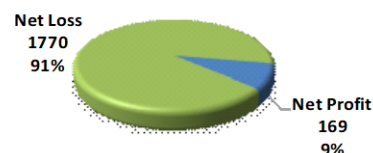
EXTENT OF REDUCTION IN SALES



Q3: In FY 2020-21, Did you make a

	Responses	Response Percentage
Net Profit	169	9%
Net Loss	1770	91%
Total	1939	100%

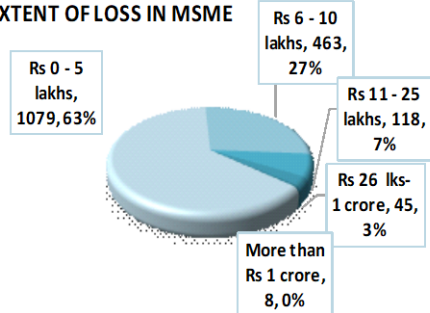
IN 2020-21, PROFIT OR LOSS ?



Q4: If you made loss, what was your loss . . .

	Responses	Response Percentage
Rs 0 - 5 lakhs	1079	63%
Rs 6 - 10 lakhs	463	27%
Rs 11 - 25 lakhs	118	7%
Rs 26 lks- 1 crore	45	3%
More than Rs 1 crore	8	0%
Grand Total	1713	100%

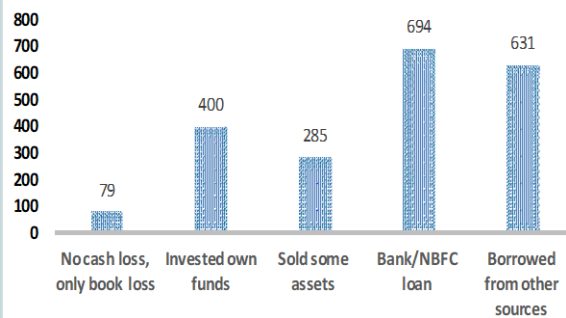
EXTENT OF LOSS IN MSME



Q5: How did you meet the loss

	Responses
No cash loss, only book loss	79
Invested own funds	400
Sold some assets	285
Bank/NBFC loan	694
Borrowed from other sources	631

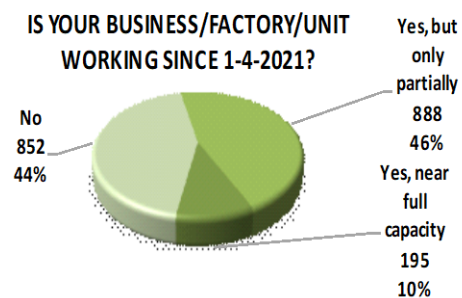
RESPONSES ON MEETING THE LOSSES



Q6: Is your business/factory/unit working since 1-4-2021?

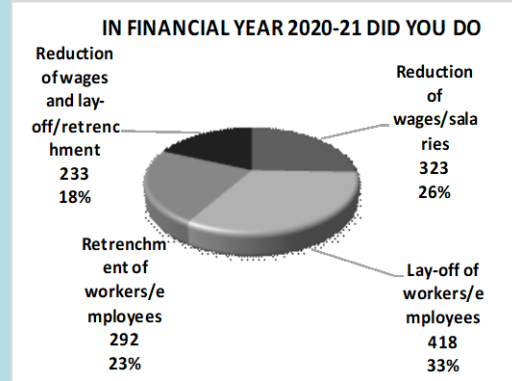
	Responses	Response Percentage
No	852	44%
Yes, but only partially	888	46%
Yes, near full capacity	195	10%
Grand Total	1935	100%

IS YOUR BUSINESS/FACTORY/UNIT WORKING SINCE 1-4-2021?



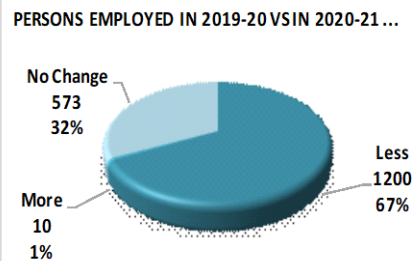
Q 7: In the Financial Year 2020-21, did you do

	Responses	Response Percentage
Reduction of wages/salaries	323	26%
Lay-off of workers/employees	418	33%
Retrenchment of workers/employees	292	23%
Reduction of wages and lay-off/retrenchment	233	18%
Grand Total	1266	100%



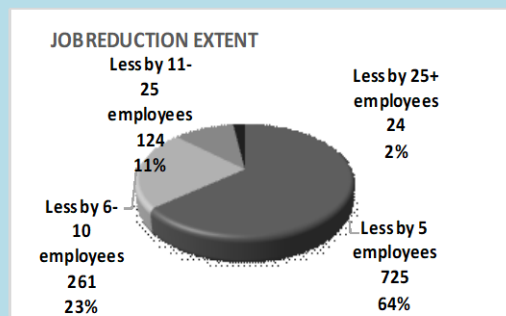
Q 8: Compared to the number of persons employed in 2019-20, the number of persons employed in 2020-21 was

	Responses	Response Percentage
Less	1200	67%
More	10	0.56%
No Change	573	32%
Grand Total	1783	100%



Q 9: If the answer to Q.8 is Less, by what number?

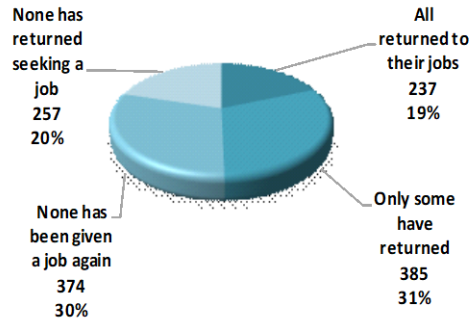
	Responses	Response Percentage
Less by 5 employees	725	64%
Less by 6-10 employees	261	23%
Less by 11-25 employees	124	11%
Less by 25+ employees	24	2%
Grand Total	1134	100%



Q 10 : If there was lay-off or retrenchment or reduction of employment, have the workers who lost their jobs

	Responses	Responses Percentage
All returned to their jobs	237	19%
Only some have returned	385	31%
None has been given a job again	374	30%
None has returned seeking a job	257	21%
Grand Total	1253	100%

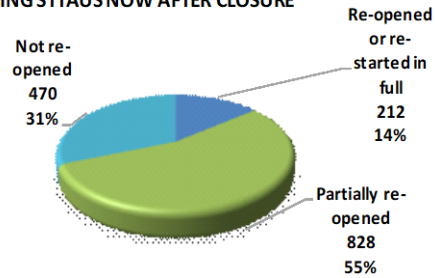
STATUS OF WORKERS RE-EMPLOYMENT...



Q 11 : If your business/factory/unit was closed during 2020-21, have you

	Responses	Response Percentage
Re-opened or re-started in full	212	14%
Partially re-opened	828	55%
Not re-opened	470	31%
Grand Total	1510	100%

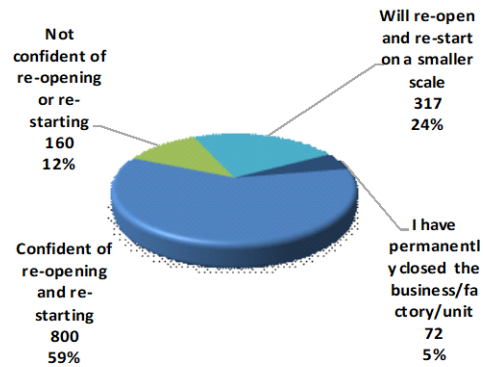
REOPENING STTAUS NOW AFTER CLOSURE



Q 12 : If your business/factory/unit is now closed, what is your expectation in the future

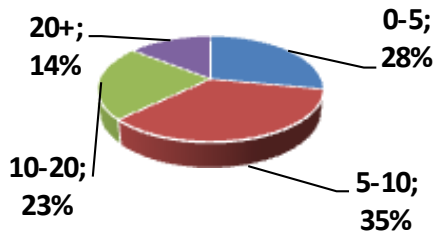
	Responses	Response Percentage
Confident of re-opening and re-starting	800	59%
Not confident of re-opening or re-starting	160	12%
Will re-open and re-start on a smaller scale	317	23%
I have permanently closed the business/factory/unit	72	5%
Grand Total	1349	100%

EXPECTATION IN THE FUTURE

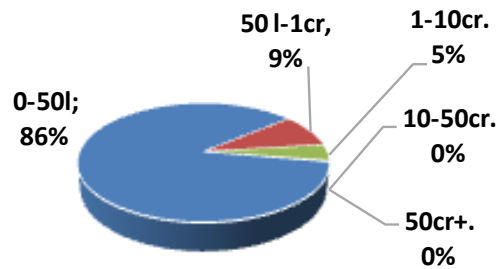


MSME Profile

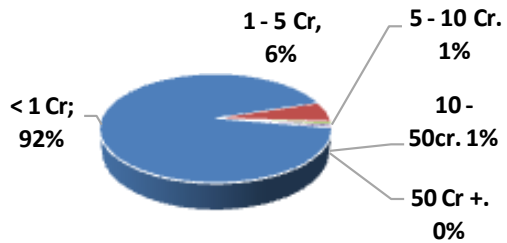
MSME Age Profile



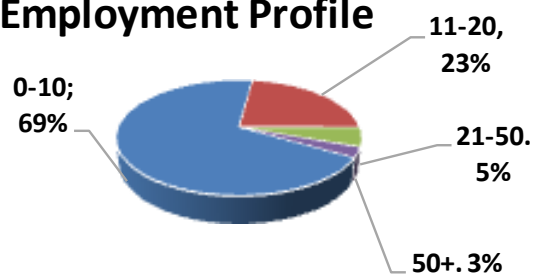
Investment Profile



Sales Turnover Profile



Employment Profile



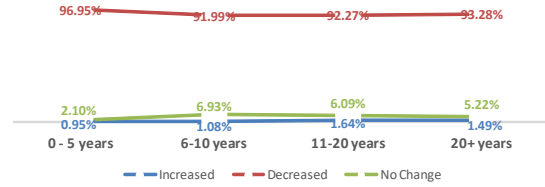
Trend Graphs for Q1 to Q12, Across MSME Profile

Trends in Q 1 to 12, Across MSMEs Age Profile

SALES TURNOVER EFFECTS OF MSME'S ACROSS DIFFERENT YEARS OF OPERATION LEVEL

	0- 5 years	6-10 years	11-20 years	20+ years
Increased	0.95%	1.08%	1.64%	1.49%
Decreased	96.95%	91.99%	92.27%	93.28%
No Change	2.10%	6.93%	6.09%	5.22%
Total	100.00%	100.00%	100.00%	100.00%

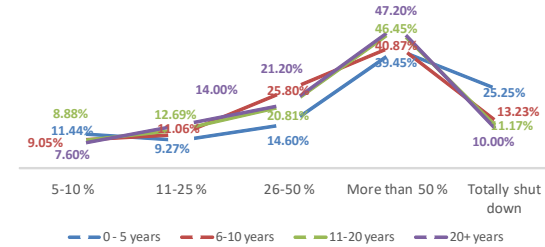
SALES TURNOVER EFFECTS OF MSME'S ACROSS DIFFERENT YEARS OF OPERATION LEVEL



SALES TURNOVER DECREASED EFFECTS OF MSME'S ACROSS DIFFERENT YEARS OF OPERATION LEVEL

	0- 5 years	6-10 years	11-20 years	20+ years
5-10 %	11.44%	9.05%	8.88%	7.60%
11-25 %	9.27%	11.06%	12.69%	14.00%
26-50 %	14.60%	25.80%	20.81%	21.20%
More than 50 %	39.45%	40.87%	46.45%	47.20%
Totally shut down	25.25%	13.23%	11.17%	10.00%
Grand Total	100.00%	100.00%	100.00%	100.00%

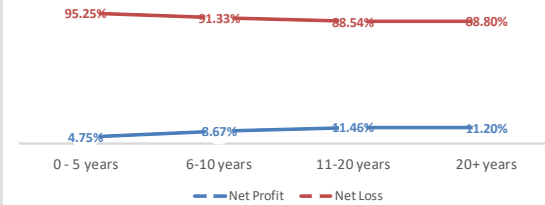
SALES TURNOVER DECREASED EFFECTS OF MSME'S ACROSS DIFFERENT YEARS OF OPERATION LEVEL



NET PROFIT/LOSS EFFECTS OF MSME'S ACROSS DIFFERENT YEARS OF OPERATION LEVEL

	0- 5 years	6-10 years	11-20 years	20+ years
Net Profit	4.75%	8.67%	11.46%	11.20%
Net Loss	95.25%	91.33%	88.54%	88.80%
Grand Total	100.00%	100.00%	100.00%	100.00%

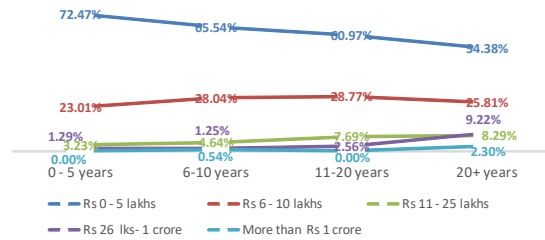
NET PROFIT/LOSS EFFECTS OF MSME'S ACROSS DIFFERENT YEARS OF OPERATION LEVEL



LOSS EFFECTS OF MSME'S ACROSS DIFFERENT YEARS OF OPERATION LEVEL

	0- 5 years	6-10 years	11-20 years	20+ years
Rs 0 - 5 lakhs	72.47%	65.54%	60.97%	54.38%
Rs 6 - 10 lakhs	23.01%	28.04%	28.77%	25.81%
Rs 11 - 25 lakhs	3.23%	4.64%	7.69%	8.29%
Rs 26 lks- 1 crore	1.29%	1.25%	2.56%	9.22%
More than Rs 1 crore	0.00%	0.54%	0.00%	2.30%
Grand Total	100.00%	100.00%	100.00%	100.00%

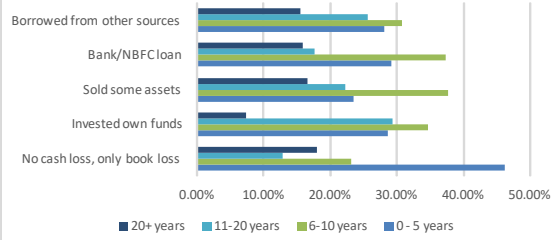
LOSS EFFECTS OF MSME'S ACROSS DIFFERENT YEARS OF OPERATION LEVEL



HOW THE LOSS WAS MET BY MSME'S WITH DIFFERENT YEARS OF OPERATION

	0- 5 years	6-10 years	11-20 years	20+ years
No cash loss, only book loss	46.15%	23.08%	12.82%	17.95%
Invested own funds	28.57%	34.66%	29.37%	7.41%
Sold some assets	23.48%	37.65%	22.27%	16.60%
Bank/NBFC loan	29.12%	37.29%	17.72%	15.87%
Borrowed from other sources	28.13%	30.73%	25.69%	15.45%

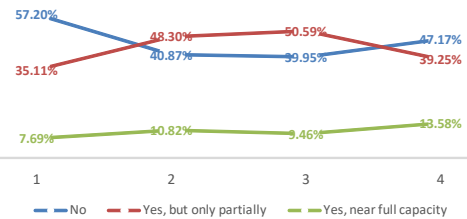
HOW THE LOSS WAS MET BY MSME'S WITH DIFFERENT YEARS OF OPERATION



UNIT WORKING STATUS ACROSS DIFFERENT YEARS OF OPERATION

	0- 5 years	6-10 years	11-20 years	20+ years
No	57.20%	40.87%	39.95%	47.17%
Yes, but only partially	35.11%	48.30%	50.59%	39.25%
Yes, near full capacity	7.69%	10.82%	9.46%	13.58%
Grand Total	100.00%	100.00%	100.00%	100.00%

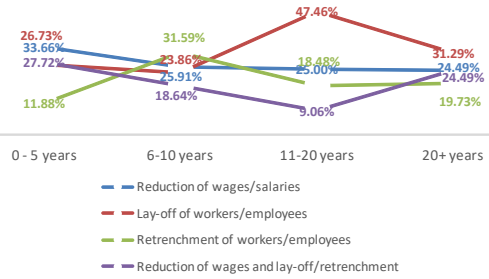
UNIT WORKING STATUS ACROSS DIFFERENT YEARS OF OPERATION



WAGES/LAYOFF/RETRENCHMENT STATUS ACROSS DIFFERENT YEARS OF OPERATION

	0- 5 years	6-10 years	11-20 years	20+ years
Reduction of wages/salaries	33.66%	25.91%	25.00%	24.49%
Lay-off of workers/employees	26.73%	23.86%	47.46%	31.29%
Retrenchment of workers/employees	11.88%	31.59%	18.48%	19.73%
and lay-off/retrenchment	27.72%	18.64%	9.06%	24.49%
Grand Total	100.00%	100.00%	100.00%	100.00%

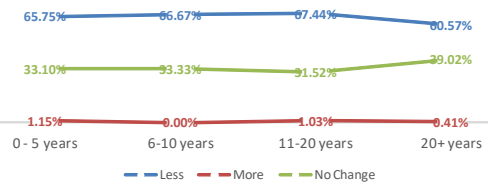
WAGES/LAYOFF/RETRENCHMENT STATUS ACROSS DIFFERENT YEARS OF OPERATION



2019-20 vs 2020-21 EMPLOYMENT STATUS ACROSS DIFFERENT YEARS OF OPERATION

	0- 5 years	6-10 years	11-20 years	20+ years
Less	65.75%	66.67%	67.44%	60.57%
More	1.15%	0.00%	1.03%	0.41%
No Change	33.10%	33.33%	31.52%	39.02%
Grand Total	100.00%	100.00%	100.00%	100.00%

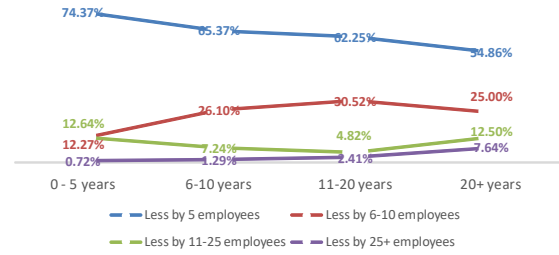
2019-20 vs 2020-21 EMPLOYMENT STATUS ACROSS DIFFERENT YEARS OF OPERATION



EMPLOYMENT LOSS STATUS ACROSS DIFFERENT YEARS OF OPERATION

	0 - 5 years	6-10 years	11-20 years	20+ years
Less by 5 employees	74.37%	65.37%	62.25%	54.86%
Less by 6-10 employees	12.27%	26.10%	30.52%	25.00%
Less by 11-25 employees	12.64%	7.24%	4.82%	12.50%
Less by 25+ employees	0.72%	1.29%	2.41%	7.64%
Grand Total	100.00%	100.00%	100.00%	100.00%

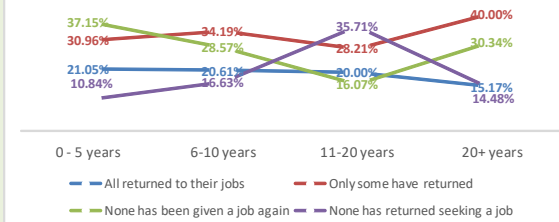
EMPLOYMENT LOSS STATUS ACROSS DIFFERENT YEARS OF OPERATION



RETURN TO JOBS STATUS ACROSS DIFFERENT YEARS OF OPERATION

	0 - 5 years	6-10 years	11-20 years	20+ years
All returned to their jobs	21.05%	20.61%	20.00%	15.17%
Only some have returned	30.96%	34.19%	28.21%	40.00%
None has been given a job again	37.15%	28.57%	16.07%	30.34%
None has returned seeking a job	10.84%	16.63%	35.71%	14.48%
Grand Total	100.00%	100.00%	100.00%	100.00%

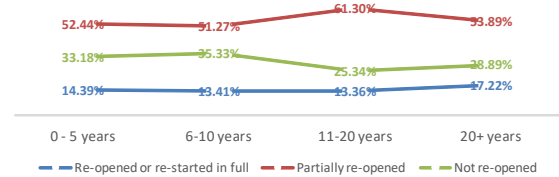
RETURN TO JOBS STATUS ACROSS DIFFERENT YEARS OF OPERATION



UNIT REOPEN STATUS ACROSS DIFFERENT YEARS OF OPERATION

	0 - 5 years	6-10 years	11-20 years	20+ years
Re-opened or re-started in full	14.39%	13.41%	13.36%	17.22%
Partially re-opened	52.44%	51.27%	61.30%	53.89%
Not re-opened	33.18%	35.33%	25.34%	28.89%
Grand Total	100.00%	100.00%	100.00%	100.00%

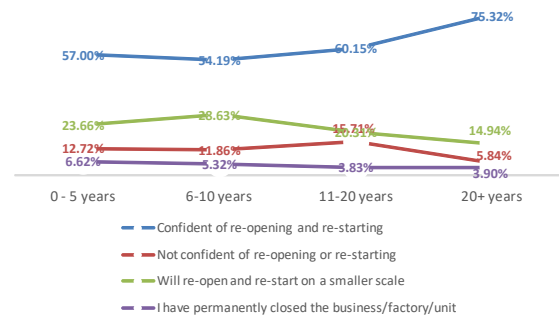
UNIT REOPEN STATUS ACROSS DIFFERENT YEARS OF OPERATION



CONFIDENCE STATUS OF RE-OPENING CLOSED UNITS ACROSS YEARS OF OPERATION

	0 - 5 years	6-10 years	11-20 years	20+ years
Confident of re-opening and re-starting	57.00%	54.19%	60.15%	75.32%
Not confident of re-opening or re-starting	12.72%	11.86%	15.71%	5.84%
Will re-open and re-start on a smaller scale	23.66%	28.63%	20.31%	14.94%
I have permanently closed the business/factory/unit	6.62%	5.32%	3.83%	3.90%
Grand Total	100.00%	100.00%	100.00%	100.00%

CONFIDENCE STATUS OF RE-OPENING CLOSED UNITS ACROSS YEARS OF OPERATION

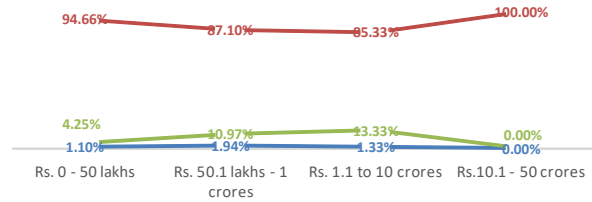


Trends Across Investment Profile

SALES TURNOVER EFFECTS OF MSME'S ACROSS DIFFERENT INVESTMENTS LEVEL

	Rs. 0 - 50 lakhs	Rs. 50.1 lakhs - 1 crores	Rs. 1.1 to 10 crores	Rs.10.1 - 50 crores
Increased	1.10%	1.94%	1.33%	0.00%
Decreased	94.66%	87.10%	85.33%	100.00%
No Change	4.25%	10.97%	13.33%	0.00%
Total	100.00%	100.00%	100.00%	100.00%

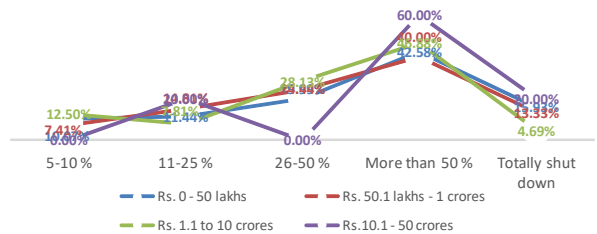
SALES TURNOVER EFFECTS ON DIFFERENT INVESTMENTS



SALES TURNOVER DECREASED EFFECTS OF MSME'S ACROSS DIFFERENT INVESTMENTS LEVEL

	Rs. 0 - 50 lakhs	Rs. 50.1 lakhs - 1 crores	Rs. 1.1 to 10 crores	Rs.10.1 - 50 crores
5-10 %	10.07%	7.41%	12.50%	0.00%
11-25 %	11.44%	14.81%	7.81%	20.00%
26-50 %	19.99%	24.44%	28.13%	0.00%
More than 50 %	42.58%	40.00%	46.88%	60.00%
Totally shut down	15.93%	13.33%	4.69%	20.00%
Grand Total	100.00%	100.00%	100.00%	100.00%

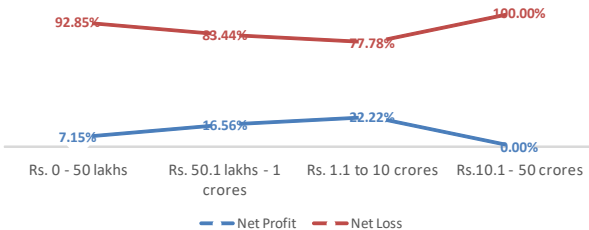
SALES TURNOVER DECREASED EFFECTS OF MSME'S ACROSS DIFFERENT INVESTMENTS LEVEL



NET PROFIT/LOSS EFFECTS OF MSME'S ACROSS DIFFERENT INVESTMENTS LEVEL

	Rs. 0 - 50 lakhs	Rs. 50.1 lakhs - 1 crores	Rs. 1.1 to 10 crores	Rs.10.1 - 50 crores
Net Profit	7.15%	16.56%	22.22%	0.00%
Net Loss	92.85%	83.44%	77.78%	100.00%
Grand Total	100.00%	100.00%	100.00%	100.00%

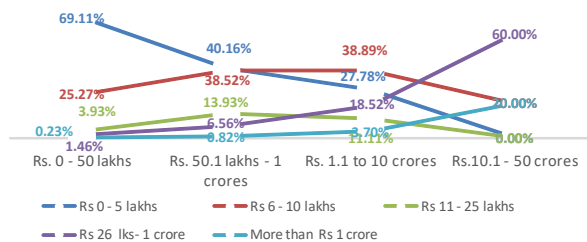
NET PROFIT/LOSS EFFECTS OF MSME'S ACROSS DIFFERENT INVESTMENTS LEVEL



LOSS EFFECTS OF MSME'S ACROSS DIFFERENT INVESTMENTS LEVEL

	Rs. 0 - 50 lakhs	Rs. 50.1 lakhs - 1 crores	Rs. 1.1 to 10 crores	Rs.10.1 - 50 crores
Rs 0 - 5 lakhs	69.11%	40.16%	27.78%	0.00%
Rs 6 - 10 lakhs	25.27%	38.52%	38.89%	20.00%
Rs 11 - 25 lakhs	3.93%	13.93%	11.11%	0.00%
Rs 26 lks- 1 crore	1.46%	6.56%	18.52%	60.00%
More than Rs 1 crore	0.23%	0.82%	3.70%	20.00%
Grand Total	100.00%	100.00%	100.00%	100.00%

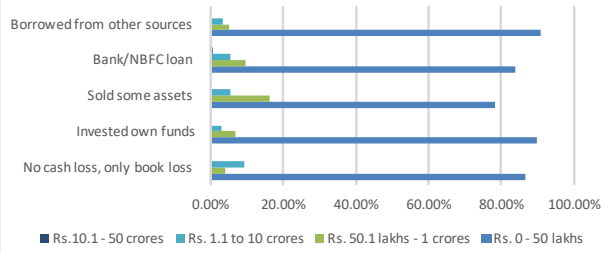
LOSS EFFECTS OF MSME'S ACROSS DIFFERENT INVESTMENTS LEVEL



HOW THE LOSS WAS MET BY MSME'S WITH DIFFERENT INVESTMENT LEVEL

	Rs. 0 - 50 lakhs	Rs. 50.1 lakhs - 1 crores	Rs. 1.1 to 10 crores	Rs.10.1 - 50 crores
No cash loss, only book loss	86.49%	4.05%	9.46%	0.00%
Invested own funds	89.69%	6.96%	3.06%	0.28%
Sold some assets	78.21%	16.24%	5.56%	0.00%
Bank/NBFC loan	83.90%	9.76%	5.65%	0.68%
Borrowed from other sources	90.76%	5.33%	3.55%	0.36%

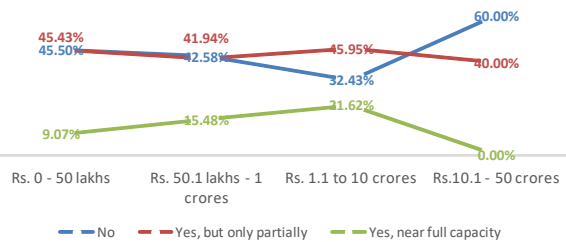
HOW THE LOSS WAS MET BY MSME'S WITH DIFFERENT INVESTMENT LEVEL



UNIT WORKING STATUS ACROSS DIFFERENT INVESTMENT LEVEL

	Rs. 0 - 50 lakhs	Rs. 50.1 lakhs - 1 crores	Rs. 1.1 to 10 crores	Rs.10.1 - 50 crores
No	45.50%	42.58%	32.43%	60.00%
Yes, but only partially	45.43%	41.94%	45.95%	40.00%
Yes, near full capacity	9.07%	15.48%	21.62%	0.00%
Grand Total	100.00%	100.00%	100.00%	100.00%

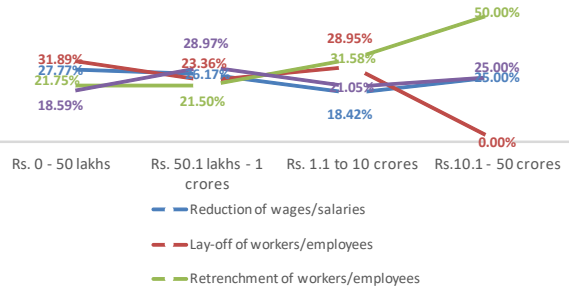
UNIT WORKING STATUS ACROSS DIFFERENT INVESTMENT LEVEL



WAGES/LAYOFF/RETRENCHMENT STATUS ACROSS DIFFERENT INVESTMENT LEVEL

	Rs. 0 - 50 lakhs	Rs. 50.1 lakhs - 1 crores	Rs. 1.1 to 10 crores	Rs.10.1 - 50 crores
Reduction of wages/salaries	27.77%	26.17%	18.42%	25.00%
Lay-off of workers/employees	31.89%	23.36%	28.95%	0.00%
Retrenchment of workers/employees	21.75%	21.50%	31.58%	50.00%
and lay-off/retrenchment	18.59%	28.97%	21.05%	25.00%
Grand Total	100.00%	100.00%	100.00%	100.00%

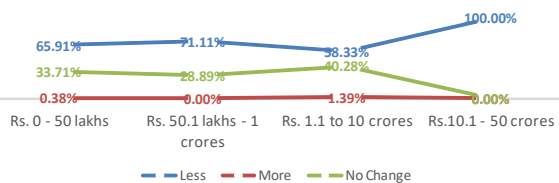
WAGES/LAYOFF/RETRENCHMENT STATUS ACROSS DIFFERENT INVESTMENT LEVEL



2019-20 vs 2020-21 EMPLOYMENT STATUS ACROSS DIFFERENT INVESTMENTS LEVEL

	Rs. 0 - 50 lakhs	Rs. 50.1 lakhs - 1 crores	Rs. 1.1 to 10 crores	Rs.10.1 - 50 crores
Less	65.91%	71.11%	58.33%	100.00%
More	0.38%	0.00%	1.39%	0.00%
No Change	33.71%	28.89%	40.28%	0.00%
Grand Total	100.00%	100.00%	100.00%	100.00%

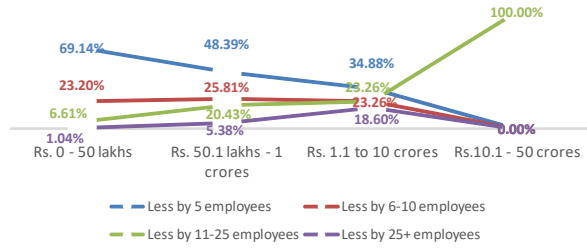
2019-20 vs 2020-21 EMPLOYMENT STATUS ACROSS DIFFERENT INVESTMENTS LEVEL



EMPLOYMENT LOSS STATUS ACROSS DIFFERENT INVESTMENT LEVELS

	Rs. 0 - 50 lakhs	Rs. 50.1 lakhs - 1 crores	Rs. 1.1 to 10 crores	Rs.10.1 - 50 crores
Less by 5 employees	69.14%	48.39%	34.88%	0.00%
Less by 6-10 employees	23.20%	25.81%	23.26%	0.00%
Less by 11-25 employees	6.61%	20.43%	23.26%	100.00%
Less by 25+ employees	1.04%	5.38%	18.60%	0.00%
Grand Total	100.00%	100.00%	100.00%	100.00%

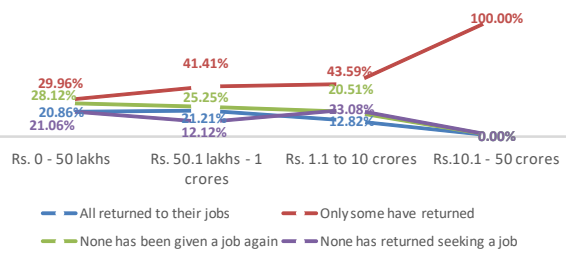
EMPLOYMENT LOSS STATUS ACROSS DIFFERENT INVESTMENT LEVELS



RETURN TO JOBS STATUS ACROSS DIFFERENT INVESTMENT LEVELS

	Rs. 0 - 50 lakhs	Rs. 50.1 lakhs - 1 crores	Rs. 1.1 to 10 crores	Rs.10.1 - 50 crores
All returned to their jobs	20.86%	21.21%	12.82%	0.00%
Only some have returned	29.96%	41.41%	43.59%	100.00%
None has been given a job again	28.12%	25.25%	20.51%	0.00%
None has returned seeking a job	21.06%	12.12%	23.08%	0.00%
Grand Total	100.00%	100.00%	100.00%	100.00%

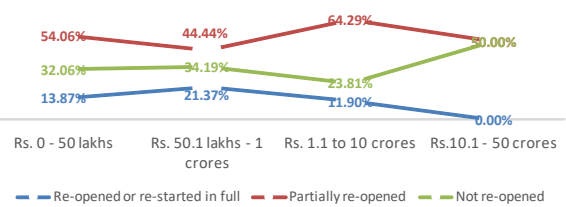
RETURN TO JOBS STATUS ACROSS DIFFERENT INVESTMENT LEVELS



UNIT REOPEN STATUS ACROSS DIFFERENT INVESTMENT LEVELS

	Rs. 0 - 50 lakhs	Rs. 50.1 lakhs - 1 crores	Rs. 1.1 to 10 crores	Rs.10.1 - 50 crores
Re-opened or re-started in full	13.87%	21.37%	11.90%	0.00%
Partially re-opened	54.06%	44.44%	64.29%	50.00%
Not re-opened	32.06%	34.19%	23.81%	50.00%
Grand Total	100.00%	100.00%	100.00%	100.00%

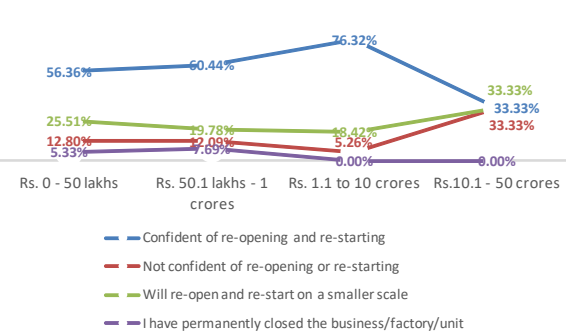
UNIT REOPEN STATUS ACROSS DIFFERENT INVESTMENT LEVELS



CONFIDENCE STATUS OF RE-OPENING CLOSED UNITS ACROSS DIFFERENT INVESTMENT LEVELS

	Rs. 0 - 50 lakhs	Rs. 50.1 lakhs - 1 crores	Rs. 1.1 to 10 crores	Rs.10.1 - 50 crores
Confident of re-opening and re-starting	56.36%	60.44%	76.32%	33.33%
Not confident of re-opening or re-starting	12.80%	12.09%	5.26%	33.33%
Will re-open and re-start on a smaller scale	25.51%	19.78%	18.42%	33.33%
I have permanently closed the business/factory/unit	5.33%	7.69%	0.00%	0.00%
Grand Total	100.00%	100.00%	100.00%	100.00%

CONFIDENCE STATUS OF RE-OPENING CLOSED UNITS ACROSS DIFFERENT INVESTMENT LEVELS

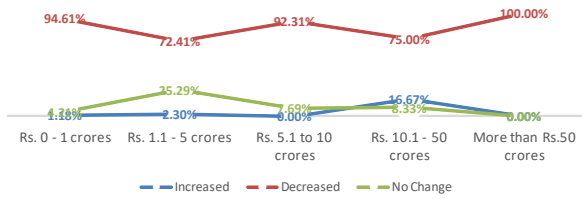


Trends Across Sales Turnover Profile

SALES TURNOVER EFFECTS OVER DIFFERENT PRE-COVID LEVELS OF SALES

	Rs. 0 - 1 crores	Rs. 1.1 - 5 crores	Rs. 5.1 to 10 crores	Rs. 10.1 - 50 crores	More than Rs.50 crores
Increased	1.18%	2.30%	0.00%	16.67%	0.00%
Decreased	94.61%	72.41%	92.31%	75.00%	100.00%
No Change	4.21%	25.29%	7.69%	8.33%	0.00%
Grand Total	100.00%	100.00%	100.00%	100.00%	100.00%

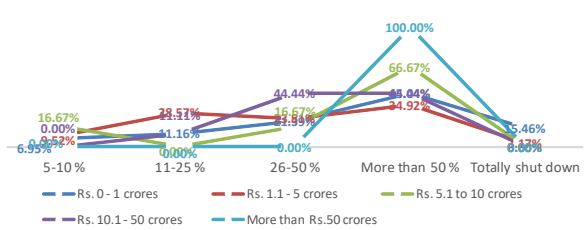
SALES TURNOVER EFFECTS OVER DIFFERENT PRE-COVID LEVELS OF SALES TURNOVER



SALES TURNOVER DECREASED EFFECTS OVER DIFFERENT PRE-COVID LEVELS OF SALES TURNOVER

	Rs. 0 - 1 crores	Rs. 1.1 - 5 crores	Rs. 5.1 to 10 crores	Rs. 10.1 - 50 crores	More than Rs.50 crores
5-10%	6.95%	9.52%	16.67%	0.00%	0.00%
11-25%	11.16%	28.57%	0.00%	11.11%	0.00%
26-50%	21.39%	23.81%	16.67%	44.44%	0.00%
More than 50%	45.04%	34.92%	66.67%	44.44%	100.00%
Totally shut down	15.46%	3.17%	0.00%	0.00%	0.00%
Grand Total	100.00%	100.00%	100.00%	100.00%	100.00%

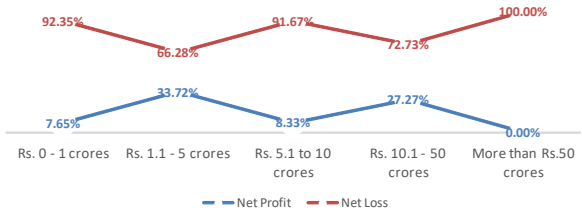
SALES TURNOVER DECREASED EFFECTS OVER DIFFERENT PRE-COVID LEVELS OF SALES TURNOVER



NET PROFIT/LOSS EFFECTS OVER DIFFERENT PRE-COVID LEVELS OF SALES TURNOVER

	Rs. 0 - 1 crores	Rs. 1.1 - 5 crores	Rs. 5.1 to 10 crores	Rs. 10.1 - 50 crores	More than Rs.50 crores
Net Profit	7.65%	33.72%	8.33%	27.27%	0.00%
Net Loss	92.35%	66.28%	91.67%	72.73%	100.00%
Grand Total	100.00%	100.00%	100.00%	100.00%	100.00%

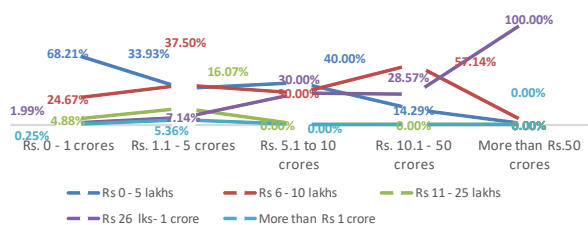
NET PROFIT/LOSS EFFECTS OVER DIFFERENT PRE-COVID LEVELS OF SALES TURNOVER



LOSS EFFECTS OF MSME'S OVER DIFFERENT PRE-COVID LEVELS OF SALES TURNOVER

	Rs. 0 - 1 crores	Rs. 1.1 - 5 crores	Rs. 5.1 to 10 crores	Rs. 10.1 - 50 crores	More than Rs.50 crores
Rs 0 - 5 lakhs	68.21%	33.93%	40.00%	14.29%	0.00%
Rs 6 - 10 lakhs	24.67%	37.50%	30.00%	57.14%	0.00%
Rs 11 - 25 lakhs	4.88%	16.07%	0.00%	0.00%	0.00%
Rs 26 lks- 1 crore	1.99%	7.14%	30.00%	28.57%	100.00%
More than Rs 1 crore	0.25%	5.36%	0.00%	0.00%	0.00%
Grand Total	100.00%	100.00%	100.00%	100.00%	100.00%

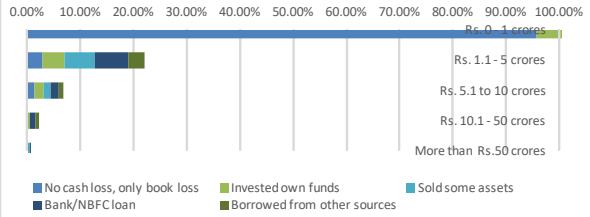
LOSS EFFECTS OF MSME'S OVER DIFFERENT PRE-COVID LEVELS OF SALES TURNOVER



HOW THE LOSS WAS MET BY MSME'S WITH DIFFERENT PRE-COVID LEVELS OF SALES TURNOVER

	Rs. 0 - 1 crores	Rs. 1.1 - 5 crores	Rs. 5.1 to 10 crores	Rs. 10.1 - 50 crores	More than Rs.50 crores
No cash loss, only book loss	95.77%	2.82%	1.41%	0.00%	0.00%
Invested own fund	93.41%	4.19%	1.80%	0.60%	0.00%
Sold some assets	92.70%	5.62%	1.12%	0.00%	0.56%
Bank/NBFC loan	90.78%	6.29%	1.68%	1.05%	0.21%
Borrowed from other sources	95.25%	3.24%	0.86%	0.65%	0.00%

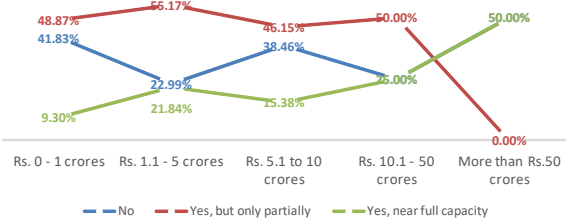
HOW THE LOSS WAS MET BY MSME'S WITH DIFFERENT PRE-COVID LEVELS OF SALES TURNOVER



UNIT WORKING STATUS ACROSS DIFFERENT LEVELS OF SALES TURNOVER PRECOVID

	Rs. 0 - 1 crores	Rs. 1.1 - 5 crores	Rs. 5.1 to 10 crores	Rs. 10.1 - 50 crores	More than Rs.50 crores
No	41.83%	22.99%	38.46%	25.00%	50.00%
Yes, but only partially	48.87%	55.17%	46.15%	50.00%	0.00%
Yes, near full capacity	9.30%	21.84%	15.38%	25.00%	50.00%
Grand Total	100.00%	100.00%	100.00%	100.00%	100.00%

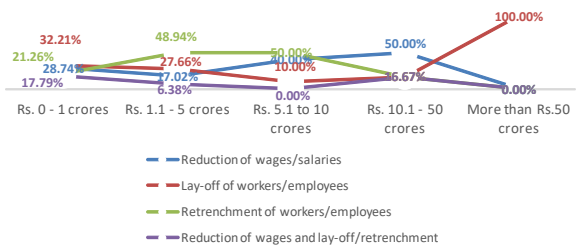
UNIT WORKING STATUS ACROSS DIFFERENT LEVELS OF SALES TURNOVER PRECOVID



WAGES/LAYOFF/RETRENCHMENT STATUS ACROSS DIFFERENT LEVELS OF SALES TURNOVER PRE COVID

	Rs. 0 - 1 crores	Rs. 1.1 - 5 crores	Rs. 5.1 to 10 crores	Rs. 10.1 - 50 crores	More than Rs.50 crores
Reduction of wages/salaries	28.74%	17.02%	40.00%	50.00%	0.00%
Lay-off of workers/employees	32.21%	27.66%	10.00%	16.67%	100.00%
Retrenchment of workers/employees	21.26%	48.94%	50.00%	16.67%	0.00%
Reduction of wages and lay-off/retrenchment	17.79%	6.38%	0.00%	16.67%	0.00%
Grand Total	100.00%	100.00%	100.00%	100.00%	100.00%

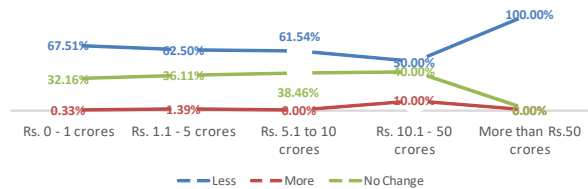
WAGES/LAYOFF/RETRENCHMENT STATUS ACROSS DIFFERENT LEVELS OF SALES TURNOVER PRE COVID



2019-20 vs 2020-21 EMPLOYMENT STATUS ACROSS DIFFERENT SALES TURNOVER PRECOVID

	Rs. 0 - 1 crores	Rs. 1.1 - 5 crores	Rs. 5.1 to 10 crores	Rs. 10.1 - 50 crores	More than Rs.50 crores
Less	67.51%	62.50%	61.54%	50.00%	100.00%
More	0.33%	1.39%	0.00%	10.00%	0.00%
No Change	32.16%	36.11%	38.46%	40.00%	0.00%
Grand Total	100.00%	100.00%	100.00%	100.00%	100.00%

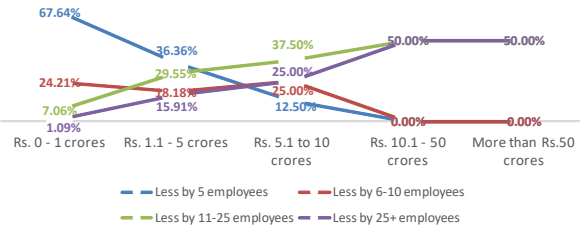
2019-20 VS 2020-21 EMPLOYMENT STATUS ACROSS DIFFERENT SALES TURNOVER PRECOVID



EMPLOYMENT LOSS STATUS ACROSS DIFFERENT LEVELS OF PRECOVID SALES TURNOVER

	Rs. 0 - 1 crores	Rs. 1.1 - 5 crores	Rs. 5.1 to 10 crores	Rs. 10.1 - 50 crores	More than Rs.50 crores
Less by 5 employees	67.64%	36.36%	12.50%	0.00%	0.00%
Less by 6-10 employees	24.21%	18.18%	25.00%	0.00%	0.00%
Less by 11-25 employees	7.06%	29.55%	37.50%	50.00%	50.00%
Less by 25+ employees	1.09%	15.91%	25.00%	50.00%	50.00%
Grand Total	100.00%	100.00%	100.00%	100.00%	100.00%

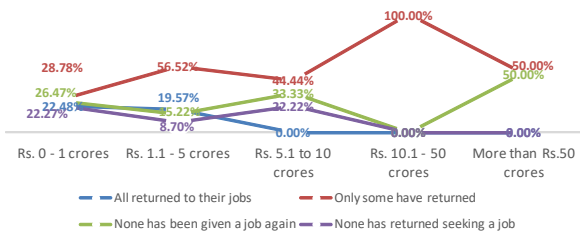
EMPLOYMENT LOSS STATUS ACROSS DIFFERENT LEVELS OF PRECOVID SALES TURNOVER



RETURN TO JOBS STATUS ACROSS DIFFERENT PRECOVID LEVELS OF SALES TURNOVER

	Rs. 0 - 1 crores	Rs. 1.1 - 5 crores	Rs. 5.1 to 10 crores	Rs. 10.1 - 50 crores	More than Rs.50 crores
All returned to their jobs	22.48%	19.57%	0.00%	0.00%	0.00%
Only some have returned	28.78%	56.52%	44.44%	100.00%	50.00%
None has been given a job again	26.47%	15.22%	33.33%	0.00%	50.00%
None has returned seeking a job	22.27%	8.70%	22.22%	0.00%	0.00%
Grand Total	100.00%	100.00%	100.00%	100.00%	100.00%

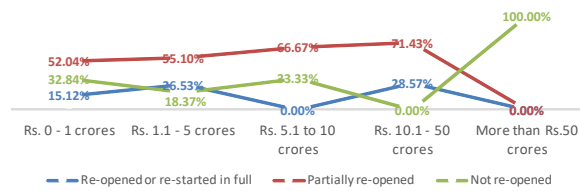
RETURN TO JOBS STATUS ACROSS DIFFERENT PRECOVID LEVELS OF SALES TURNOVER



UNIT REOPEN STATUS ACROSS DIFFERENT PRECOVID LEVELS OF SALES TURNOVER

	Rs. 0 - 1 crores	Rs. 1.1 - 5 crores	Rs. 5.1 to 10 crores	Rs. 10.1 - 50 crores	More than Rs.50 crores
Re-opened or re-started in full	15.12%	26.53%	0.00%	28.57%	0.00%
Partially re-opened	52.04%	55.10%	66.67%	71.43%	0.00%
Not re-opened	32.84%	18.37%	33.33%	0.00%	100.00%
Grand Total	100.00%	100.00%	100.00%	100.00%	100.00%

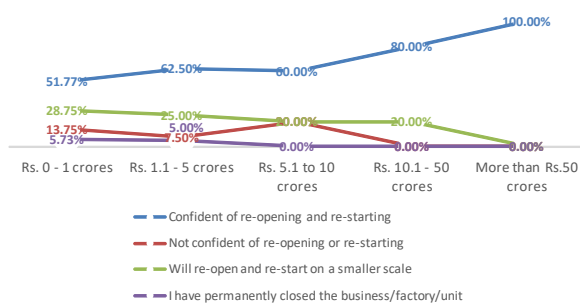
UNIT REOPEN STATUS ACROSS DIFFERENT PRECOVID LEVELS OF SALES TURNOVER



CONFIDENCE STATUS OF RE-OPENING CLOSED UNITS ACROSS DIFFERENT PRECOVID LEVELS OF SALES TURNOVER

	Rs. 0 - 1 crores	Rs. 1.1 - 5 crores	Rs. 5.1 to 10 crores	Rs. 10.1 - 50 crores	More than Rs.50 crores
Confident of re-opening and re-starting	51.77%	62.50%	60.00%	80.00%	100.00%
Not confident of re-opening or re-starting	13.75%	7.50%	20.00%	0.00%	0.00%
Will re-open and re-start on a smaller scale	28.75%	25.00%	20.00%	20.00%	0.00%
I have permanently closed the business/factory/unit	5.73%	5.00%	0.00%	0.00%	0.00%
Grand Total	100.00%	100.00%	100.00%	100.00%	100.00%

CONFIDENCE STATUS OF RE-OPENING CLOSED UNITS ACROSS DIFFERENT PRECOVID LEVELS OF SALES TURNOVER

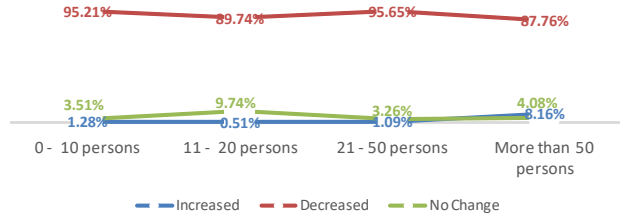


Trends Across Employment Profile

SALES TURNOVER EFFECTS OVER DIFFERENT LEVELS OF EMPLOYMENT PRE-COVID

	0 - 10 persons	11 - 20 persons	21 - 50 persons	More than 50 persons
Increased	1.28%	0.51%	1.09%	8.16%
Decreased	95.21%	89.74%	95.65%	87.76%
No Change	3.51%	9.74%	3.26%	4.08%
Grand Total	100.00%	100.00%	100.00%	100.00%

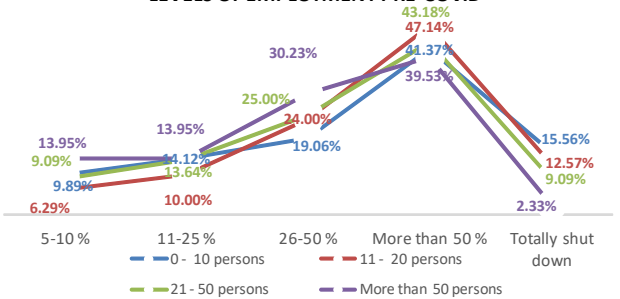
SALES TURNOVER EFFECTS OVER DIFFERENT LEVELS OF EMPLOYMENT PRE-COVID



SALES TURNOVER DECREASED EFFECTS OVER DIFFERENT LEVELS OF EMPLOYMENT PRE-COVID

	0 - 10 persons	11 - 20 persons	21 - 50 persons	More than 50 persons
5-10%	9.89%	6.29%	9.09%	13.95%
11-25 %	14.12%	10.00%	13.64%	13.95%
26-50 %	19.06%	24.00%	25.00%	30.23%
More than 50 %	41.37%	47.14%	43.18%	39.53%
Totally shut down	15.56%	12.57%	9.09%	2.33%
Grand Total	100.00%	100.00%	100.00%	100.00%

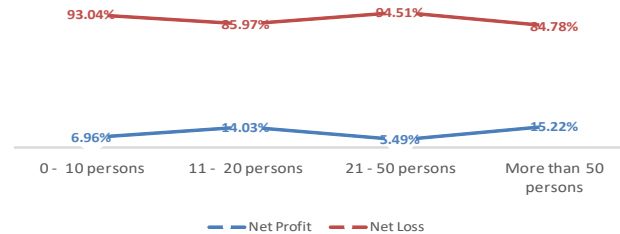
SALES TURNOVER DECREASED EFFECTS OVER DIFFERENT LEVELS OF EMPLOYMENT PRE-COVID



NET PROFIT/LOSS EFFECTS OVER DIFFERENT LEVELS OF EMPLOYMENT PRE-COVID

	0 - 10 persons	11 - 20 persons	21 - 50 persons	More than 50 persons
Net Profit	6.96%	14.03%	5.49%	15.22%
Net Loss	93.04%	85.97%	94.51%	84.78%
Grand Total	100.00%	100.00%	100.00%	100.00%

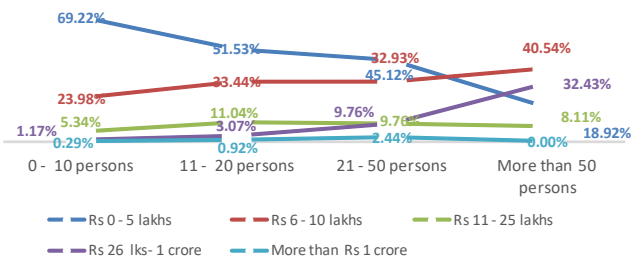
NET PROFIT/LOSS EFFECTS OVER DIFFERENT LEVELS OF EMPLOYMENT PRE-COVID



LOSS EFFECTS OF MSME'S OVER DIFFERENT LEVELS OF EMPLOYMENT PRE-COVID

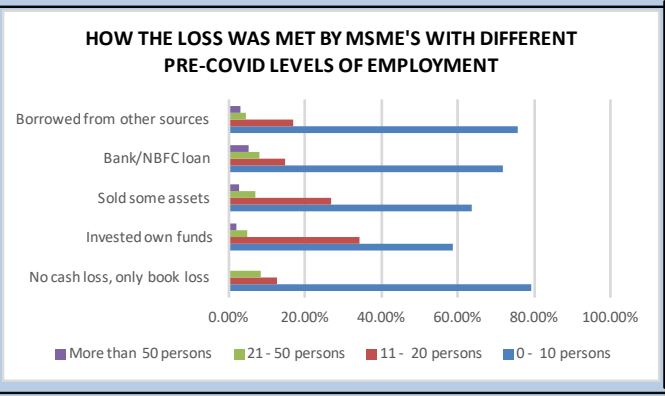
	0 - 10 persons	11 - 20 persons	21 - 50 persons	More than 50 persons
Rs 0 - 5 lakhs	69.22%	51.53%	45.12%	18.92%
Rs 6 - 10 lakhs	23.98%	33.44%	32.93%	40.54%
Rs 11 - 25 lakhs	5.34%	11.04%	9.76%	8.11%
Rs 26 lks - 1 crore	1.17%	3.07%	9.76%	32.43%
More than Rs 1 crore	0.29%	0.92%	2.44%	0.00%
Grand Total	100.00%	100.00%	100.00%	100.00%

LOSS EFFECTS OF MSME'S OVER DIFFERENT LEVELS OF EMPLOYMENT PRE-COVID



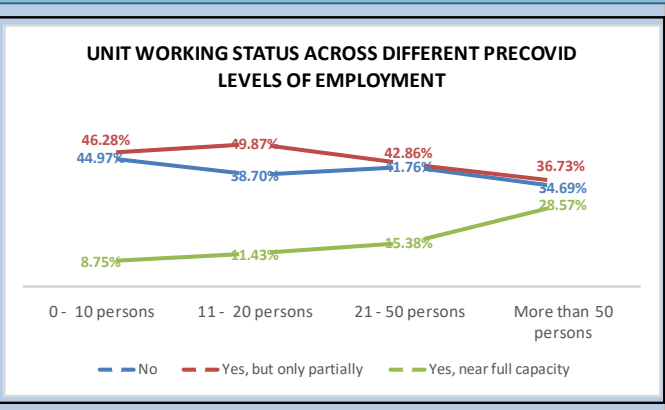
HOW THE LOSS WAS MET BY MSME'S WITH DIFFERENT PRE-COVID LEVELS OF EMPLOYMENT

	0 - 10 persons	11 - 20 persons	21 - 50 persons	More than 50 persons
No cash loss, only book loss	79.17%	12.50%	8.33%	0.00%
Invested own funds	58.88%	34.32%	4.73%	2.07%
Sold some assets	63.56%	26.72%	6.88%	2.83%
Bank/NBFC loan	71.75%	14.90%	8.22%	5.14%
Borrowed from other sources	75.58%	16.92%	4.42%	3.08%



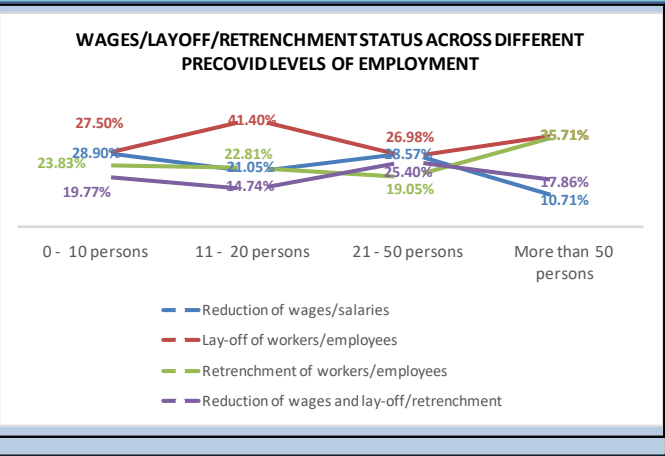
UNIT WORKING STATUS ACROSS DIFFERENT PRECOVID LEVELS OF EMPLOYMENT

	0 - 10 persons	11 - 20 persons	21 - 50 persons	More than 50 persons
No	44.97%	38.70%	41.76%	34.69%
Yes, but only partially	46.28%	49.87%	42.86%	36.73%
Yes, near full capacity	8.75%	11.43%	15.38%	28.57%
Grand Total	100.00%	100.00%	100.00%	100.00%



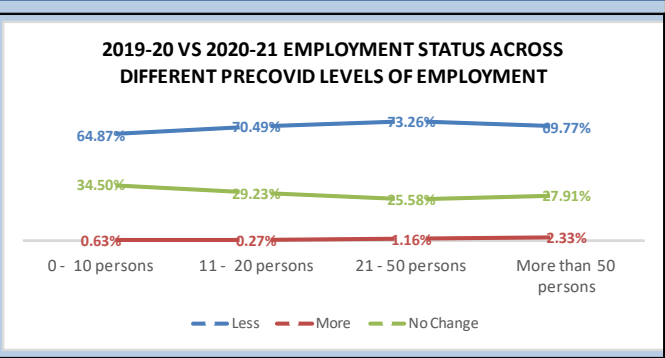
WAGES/LAYOFF/RETRENCHMENT STATUS ACROSS DIFFERENT PRECOVID LEVELS OF EMPLOYMENT

	0 - 10 persons	11 - 20 persons	21 - 50 persons	More than 50 persons
Reduction of wages/salaries	28.90%	21.05%	28.57%	10.71%
Lay-off of workers/employees	27.50%	41.40%	26.98%	35.71%
Retrenchment of workers/employees	23.83%	22.81%	19.05%	35.71%
Reduction of wages and lay-off/retrenchment	19.77%	14.74%	25.40%	17.86%
Grand Total	100.00%	100.00%	100.00%	100.00%



2019-20 vs 2020-21 EMPLOYMENT STATUS ACROSS DIFFERENT PRECOVID LEVELS OF EMPLOYMENT

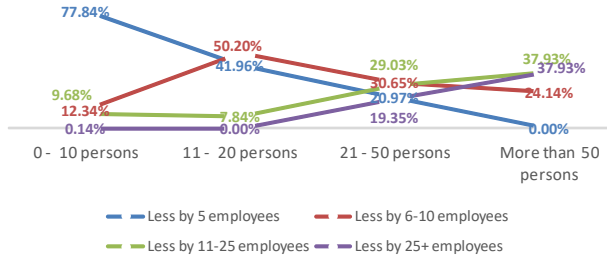
	0 - 10 persons	11 - 20 persons	21 - 50 persons	More than 50 persons
Less	64.87%	70.49%	73.26%	69.77%
More	0.63%	0.27%	1.16%	2.33%
No Change	34.50%	29.23%	25.58%	27.91%
Grand Total	100.00%	100.00%	100.00%	100.00%



EMPLOYMENT LOSS STATUS ACROSS DIFFERENT PRECOVID LEVELS OF EMPLOYMENT

	0 - 10 persons	11 - 20 persons	21 - 50 persons	More than 50 persons
Less by 5 employees	77.84%	41.96%	20.97%	0.00%
Less by 6-10 employees	12.34%	50.20%	30.65%	24.14%
Less by 11-25 employees	9.68%	7.84%	29.03%	37.93%
Less by 25+ employees	0.14%	0.00%	19.35%	37.93%
Grand Total	100.00%	100.00%	100.00%	100.00%

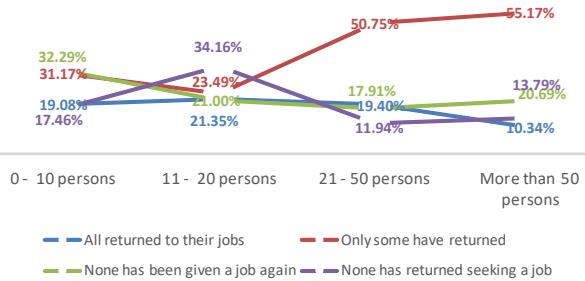
EMPLOYMENT LOSS STATUS ACROSS DIFFERENT PRECOVID LEVELS OF EMPLOYMENT



RETURN TO JOBS STATUS ACROSS DIFFERENT PRECOVID LEVELS OF EMPLOYMENT

	0 - 10 persons	11 - 20 persons	21 - 50 persons	More than 50 persons
All returned to their jobs	19.08%	21.35%	19.40%	10.34%
Only some have returned	31.17%	23.49%	50.75%	55.17%
None has been given a job again	32.29%	21.00%	17.91%	20.69%
None has returned seeking a job	17.46%	34.16%	11.94%	13.79%
Grand Total	100.00%	100.00%	100.00%	100.00%

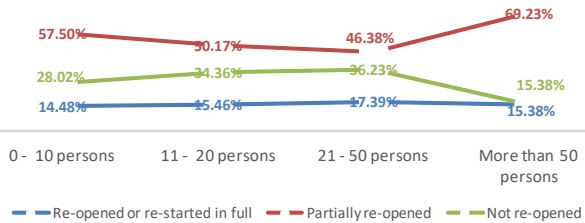
RETURN TO JOBS STATUS ACROSS DIFFERENT PRECOVID LEVELS OF EMPLOYMENT



UNIT REOPEN STATUS ACROSS DIFFERENT PRECOVID LEVELS OF EMPLOYMENT

	0 - 10 persons	11 - 20 persons	21 - 50 persons	More than 50 persons
Re-opened or re-started in full	14.48%	15.46%	17.39%	15.38%
Partially re-opened	57.50%	50.17%	46.38%	69.23%
Not re-opened	28.02%	34.36%	36.23%	15.38%
Grand Total	100.00%	100.00%	100.00%	100.00%

UNIT REOPEN STATUS ACROSS DIFFERENT PRECOVID LEVELS OF EMPLOYMENT



CONFIDENCE STATUS OF REOPENING CLOSED UNITS ACROSS DIFFERENT PRECOVID LEVELS OF EMPLOYMENT

	0 - 10 persons	11 - 20 persons	21 - 50 persons	More than 50 persons
Confident of re-opening and re-starting	62.00%	48.39%	68.97%	83.33%
Not confident of re-opening or re-starting	10.57%	19.76%	12.07%	12.50%
Will re-open and re-start on a smaller scale	21.85%	27.42%	18.97%	4.17%
I have permanently closed the business/factory/unit	5.58%	4.44%	0.00%	0.00%
Grand Total	100.00%	100.00%	100.00%	100.00%

CONFIDENCE STATUS OF REOPENING CLOSED UNITS ACROSS DIFFERENT PRECOVID LEVELS OF EMPLOYMENT

